



RECP #: 754600
 RECORDED 6/5/2019 AT 3:37 PM BK# 2624 PG# 269
 Debra K. Lee, CLERK OF LARAMIE COUNTY, WY PAGE 1 OF 1

STATE OF WYOMING CORNER RECORD

(In compliance with the CORNER PERPETUATION AND FILING ACT, Wyoming Statutes, 1997 Section 33-29-140, et. seq., and the Rules and Regulations of the Board of Registrations for Professional Engineers and Professional Land Surveyors)

NORTHEAST CORNER SECTION 9, T. 17 N., R. 62 W., 6TH P.M., LARAMIE COUNTY, WYOMING

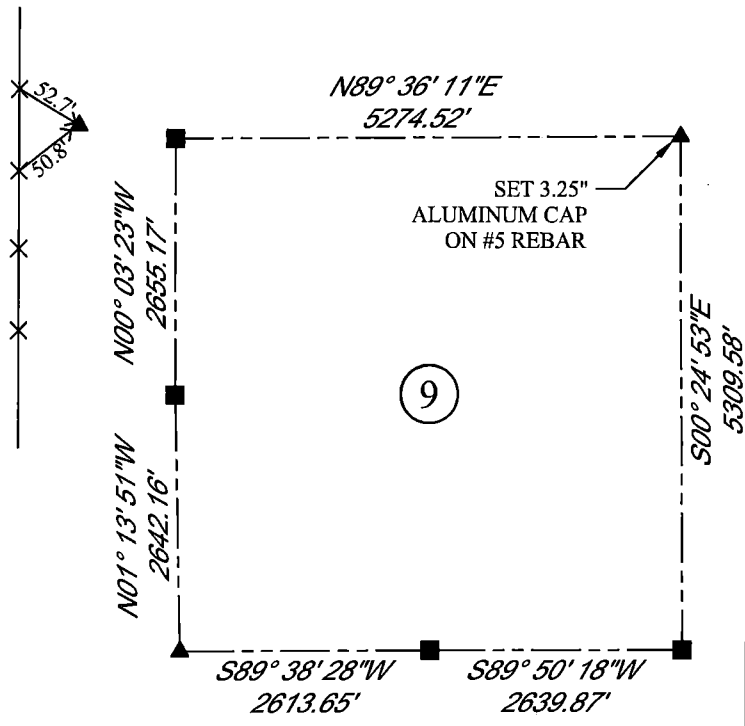
GLO: SANDSTONE 20X12X3 1/2 SET 12 IN DEEP MARKED WITH 5 NOTCHES ON S SIDE AND 3 NOTCHES ON E SIDE FOR THE COR TO SECS 3,4,9,10.

FOUND: NOTHING

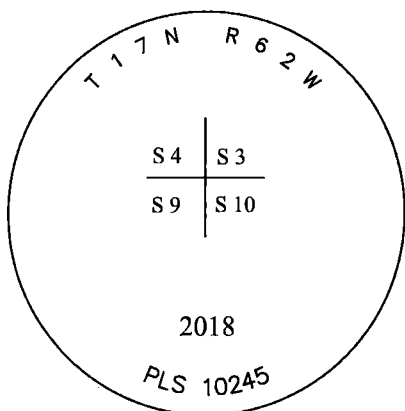
SET: 3.25" ALUMINUM CAP ON #5 REBAR, AT GROUND SURFACE. SET MAG NAILS WITH PINK FLAGGING ON FENCE POSTS. POSITION RE-ESTABLISHED BY DOUBLE PROPORTION.



SCALE: NONE
 NORTH DETERMINED BY
 G.P.S OBSERVATIONS



SET 3.25" ALUMINUM CAP, STAMPED AS SHOWN



LEGEND:

- FOUND BLM CAP
- FOUND USFS CAP
- FOUND STONE
- FOUND PRIVATE MONUMENT
- ▲ CALCULATED POSITION
- ◆ SET MONUMENT (LS10245)
- SECTION LINE

DATE OF FIELD WORK: 10/23/2018 OFFICE REFERENCE: MERIDEN

CROSS INDEX DIAGRAM

1	2	3	4	5	6	7	8	9	10	11	12	13	14	15	16	17	18	19	20	21	22	23	24	25	
A																									A
B																									B
C																									C
D																									D
E																									E
F																									F
G																									G
H																									H
J																									J
K																									K
L																									L
M																									M
N																									N
O																									O
P																									P
Q																									Q
R																									R
S																									S
T																									T
U																									U
V																									V
W																									W
X																									X
Y																									Y
Z																									Z
1	2	3	4	5	6	7	8	9	10	11	12	13	14	15	16	17	18	19	20	21	22	23	24	25	

WOOD
 2615 AVIATION DRIVE
 SHERIDAN, WY 82801
 PH: 307-675-6400



THIS CORNER RECORD WAS
 PREPARED BY ME OR UNDER
 MY DIRECTION AND
 SUPERVISION,
 SEAL AND SIGNATURE

